

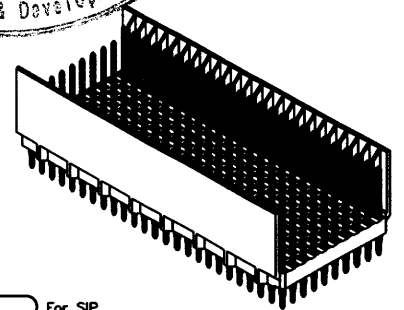
CODE	DIMENSION	
	MATING POST LENGTH	LEAD LENGTH
01	5.20	3.70
02	6.70	3.70
03	8.20	3.70
04	5.20	4.50
05	6.70	4.50
06	8.20	4.50
07	5.20	13.00
08	6.70	13.00
09	8.20	13.00
10	5.20	14.50
11	6.70	14.50
12	8.20	14.50
13	5.20	16.00
14	6.70	16.00
15	8.20	16.00
16	11.20	3.70

CONTACT DIMENSIONS

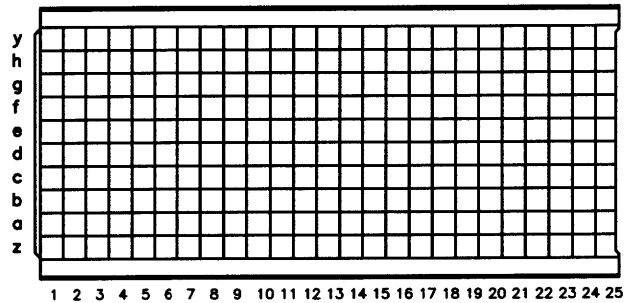
SPECIFICATION
MATERIAL
 Insulator: Thermal Plastic UL94V-0
 Contacts: Copper Alloy
CONTACT PLATING
 Underplate: 50u" Nickel
 Contact area: 1u"~30u" Selective Gold
 Solder tails area: 100u" Tin(Lead Free)
ELECTRICAL
 Operation voltage: 500 VAC max.
 Current rating: 1 Amps max.
 Contact resistance: 25 mohms max.
 Insulation resistance: 1000 Mohms min
 Dielectric withstanding voltage: 1000 VAC / minute
 Temperature Range: -55°C TO +125°C
PART NO.
 610 G X XXX M X E1 X A 4
 1 2 3 4 5 6 7 8 9 10

1.SERIES NO:
 610=(2.0mm)Compact PCI
 2.CONTACT TAIL TYPE :
 G=PRESS FIT TYPE
 3.ENVIRONMENT PROTECTION
MATERIAL
 J=SONY SS-00259(Reserved)
 K=SONY SS-00259(Matte Tin)
 (Reserved)
 E=RoHS
 F=RoHS (Matte Tin)
 4.CONTACT NUMBER:
 250=250PIN
 5.CONTACT TYPE:
 M=MALE

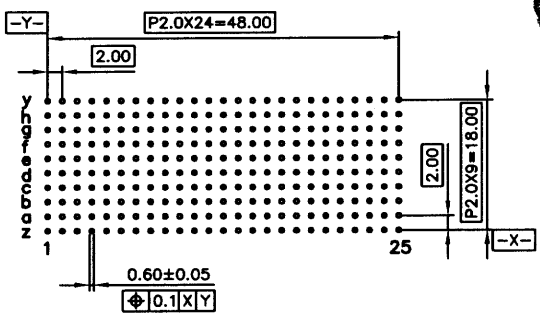
6.CONTACT AREA PLATING:
 S=Gold Flash (Selective)
 R=3u" Gold (Selective)
 A=5u" Gold (Selective)
 B=10u" Gold (Selective)
 C=15u" Gold (Selective)
 D=30u" Gold (Selective)
 Y=2u" Gold/25u"(pd)(Selective)
 7.TYPE:
 E1=E TYPE(STANDARD)
 (W/ TOP SHELL)
 8.CONTACT LAYOUT NUM.
 A=LENGTH ALL THE SAME
 & FULL PINS
 B~Z=DIFFERENT PIN LENGTH
 9. CONTACT LAYOUT NUM.
 A=FULL PIN(STANDARD)
 10.INSULATOR COLOR:
 4=GREY



For SIP
 (ST) For cmk/cpk



LOADING PATTERN MATING SIDE



RECOMMENDED PCB-HOLE LAYOUT
 COMPONENT SIDE SHOWN
 TOLERANCES: ±0.05mm

UNLESS OTHERWISE SPECIFIED TOLERANCE	
ANG.	±5°
0.	±0.5
.0	±0.3
.00	±0.2

OXOC
CHANT SINCERE CO., LTD
 TEL:886-02-6421251 FAX:886-02-6421982

REV.	DESCRIPTION	DATE	REV.	DESCRIPTION	DATE	SIZE	REV.	FILE NAME:
G	ECN-0803013(Sally) (5,E)(9,F)	03/03/08				A4	H	610GX250MXE1XA4
F	ECN-0703033(Paige) (1,G)	03/01/07						610GK250MXE1XA4
E	ECN-0611045(Pearl) (9,F)	11/21/06	H	ECN-0808013(Sally) (9,F)	08/01/08			

SCALE: AS SHOWN UNIT: mm
 DRAWN PEARL 08/01/08
 CHECKED Cheryl 08/05/08
 APPROVED Joe 08/05/08

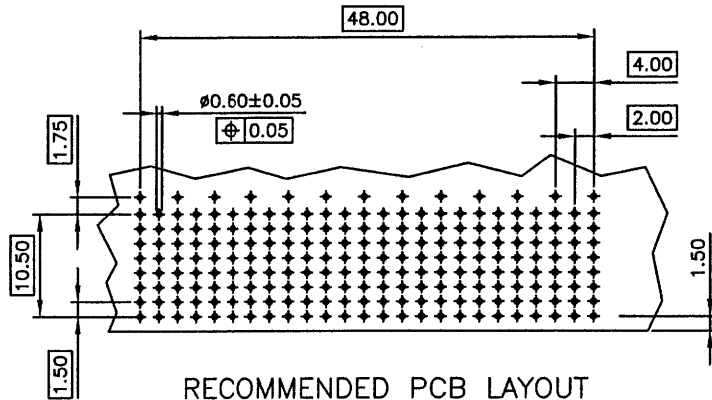
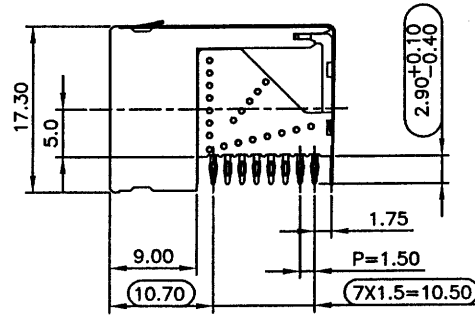
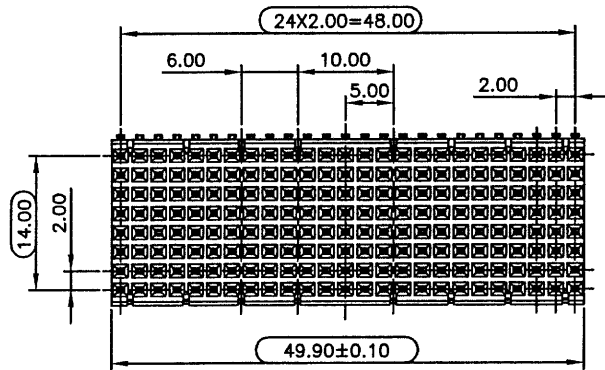
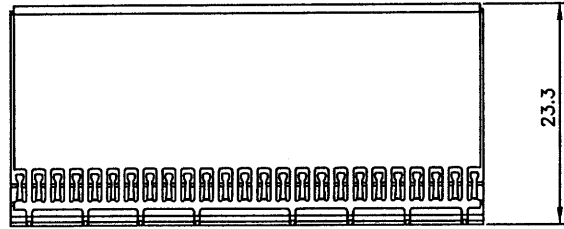
DRAWN NAME:
 2mm Hard Metric Connector
 Vertical Male Type E(8+2)
 PRODUCT NO. 610GX250MXE1XA4
 FILE NAME: 610GK250MXE1XA4



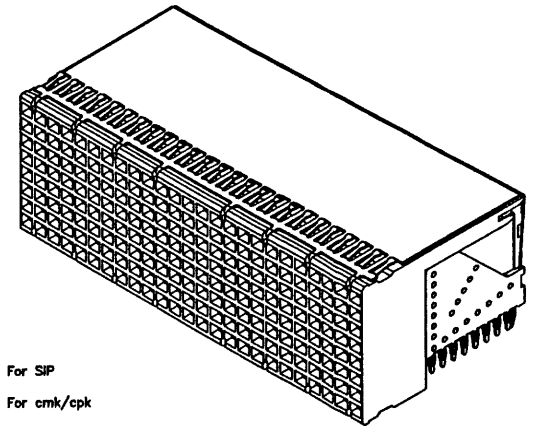
SPECIFICATION
MATERIAL
 Insulator: Thermal Plastic UL94V-0
 Contacts: Copper Alloy
CONTACT PLATING
 Underplate: 50u" Nickel
 Contact area: 5u"~30u" Selective gold
 Solder tails area: 100u" Tin/Lead Free (Brighten Tin/Matte Tin)
ELECTRICAL
 Operation voltage: 500 VAC max.
 Current rating: 1 Amps max.
 Contact resistance: 25 mohms max.
 Insulation resistance: 1000 Mohms min
 Dielectric withstanding voltage: 1000 VAC / minute
 Operating temperature: -55°C TO +125°C
 PART NO.

610 G X XXX F X E1 A A 4
 1 2 3 4 5 6 7 8 9 10

- 1.SERIES NO:
610=(2.0mm)Compact PCI
- 2.CONTACT TAIL TYPE :
G=PRESS FIT TYPE
- 3.ENVIRONMENT PROTECTION MATERIAL.
J=SONY SS-00259(Reserved)
K=SONY SS-00259(Matte Tin)
(Reserved)
E=RoHS
F=RoHS (Matte Tin)
- 4.CONTACT NUMBER:
200=8 ROW X 25 COLUMN
- 5.CONTACT TYPE:
F=FEMALE
- 6.CONTACT AREA PLATING:
A=5u" Gold (Selective)
△B=10u" Gold (Selective)
D=30u" Gold (Selective)
- 7.TYPE:
E1=E TYPE(STANDARD)
(W/ TOP SHELL)
- 8.CONTACT LEAD LENGTH
A=2.90mm
9. CONTACT LAYOUT NUM.
A=FULL PIN(STANDARD)
- 10.INSULATOR COLOR:
4=GREY



RECOMMENDED PCB LAYOUT
 TOLERANCES: ±0.05mm



For SIP
 (ST) For cmk/cpk

UNLESS OTHERWISE SPECIFIED TOLERANCE	
ANG.	±5°
D.	±0.5
.0	±0.3
.00	±0.2

SCALE: AS SHOWN UNIT: mm

OXOC
CHANT SINCERE CO., LTD
 TEL:886-02-6421251 FAX:886-02-6421962

REV.		DESCRIPTION	DATE
A	C	ECN-0611045(Pearl) (9,E)	11/21/06
	B	ECN-0604030(James) (9,E)	04/17/06
	A	ECN-0602111(Szuchin)	02/21/06

DRAWN	PEARL	11/21/06
CHECKED	Joe	11/21/06
APPROVED	Clark	11/22/06
SIZE	A4	REV. C

DRAWN NAME:
2mm Hard Metric Connector
R/A Female, Type E(8+2)
 PRODUCT NO. 610GX200FXE1AA4
 FILE NAME: 610GK200FXE1AA4