

RECOMMENDED P.C.B LAYOUT(TOP VIEW)
 TOLERANCES: ±0.05mm

SPECIFICATION
 MATERIAL
 Insulator: Thermal Plastic UL94V-0
 Contacts: Copper Alloy
 Rivet,Boardlock: Copper Alloy
 CONTACT PLATING
 Underplate: 50u"~100u" Nickel
 Contact Area: 1u"~30u" Selective Gold
 Solder Tails Area: 100u"~200u" Tin(Lead Free)
 ELECTRICAL
 Operation Voltage: 250 VAC Max.
 Current Rating:

TEMP(°C)	20	70	100
CURRENT	2.0A	1.6A	1.0A

Contact Resistance: 20 mohms Max.
 Insulation Resistance: 1000 Mohms Min. @ 500 VDC
 Dielectric Withstanding Voltage: 1000 VAC/minute
 Operating Temperature: -55°C to +125°C
 PART NO.

405 A X XX M X R X A E X
 1 2 3 4 5 6 7 8 9 10 11

- SERIES NO.
- TYPE:
A=Standard
- GREEN OPTION:
J=SONY SS-00259(Reserved)
K=SONY SS-00259(Matte Tin)
(Reserved)
E=RoHS
F=RoHS(Matte Tin)
- CONTACT NUMBER
See NOTE
- CONTACT TYPE:
M=Male
- CONTACT PLATING:
G=Gold Flash
S=Gold Flash (Selective)
A=5u" Gold (Selective)
B=10u" Gold (Selective)
C=15u" Gold (Selective)
D=30u" Gold (Selective)
K=1u" Gold Flash and
10u" on Contact Area
- MOUNTING TYPE:
R=Right Angle
- TYPE
A=B Type For 64 pin
(Long Body)
B=B Type For 32 pin
(Short Body)
- CONTACT INSERTING OPTION
A=Dual Row(a+b)
- CONTACT LENGTH
E=2.9mm(Right Angle Only)
- INSULATOR COLOR
4=Gray
5=Gray(420C)



NOTE:

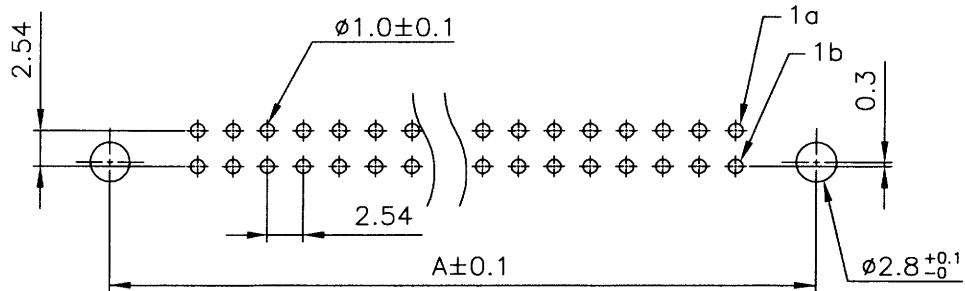
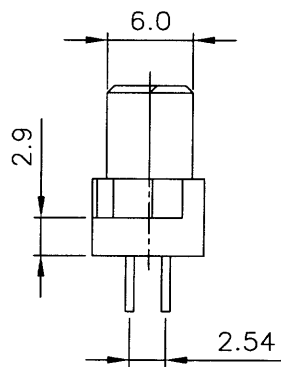
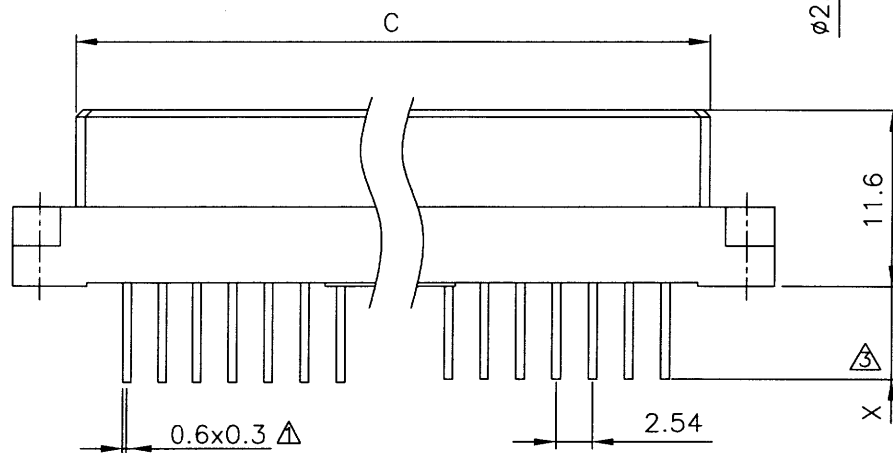
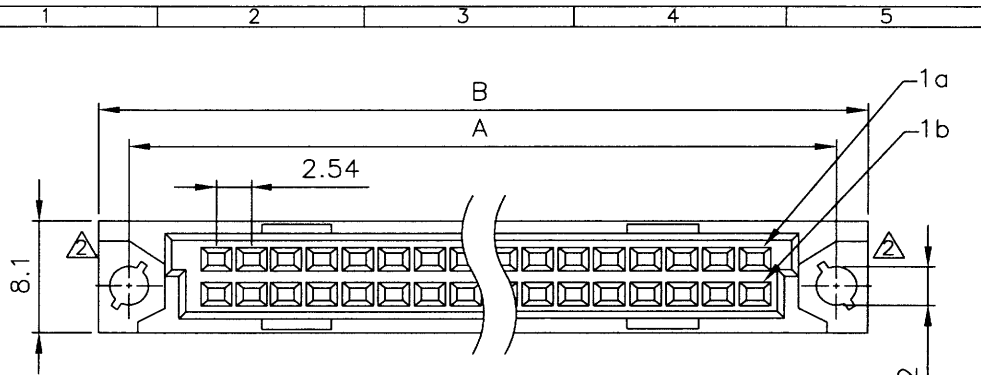
POSITION	A	B	C
64M	88.90	94	85.2
32M	48.26	53	44.6

UNLESS OTHERWISE SPECIFIED TOLERANCE	
ANG.	±5°
0.	±0.5
.0	±0.3
.00	±0.2

SCALE: AS SHOWN UNIT: mm

OXOC
 CHANT SINCERE CO., LTD
 TEL:886-02-86471251 FAX:886-02-86472962

REV.	DESCRIPTION	DATE	SIZE	REV.	FILE NAME:
I	ECN-0811251(Chichi) (9,D)	11/27/08	A4		405AXXXMXRAXEX
H	ECN-0811152(Joanna) (5,E)	11/17/08			405AKXXMXRAEX
G	ECN-0811117(Fanny) (7,F)	11/14/08			



RECOMMENDED P.C.B LAYOUT(TOP VIEW)
TOLERANCES: ±0.05mm

△ SPECIFICATION

MATERIAL
 Insulator: Thermal Plastic UL94V-0
 Contacts: Copper Alloy
 Shell: Steel
 Rivet,Boardlock: Copper Alloy
 CONTACT PLATING
 Underplate: 50u"~100u" Nickel
 Contact Area: 1u"~30u" Selective Gold
 Solder Tails Area: 100u"~200u" Tin(Lead Free)
 ELECTRICAL
 Operation Voltage: 250 VAC Max.
 Current Rating:

TEMP(°C)	20	70	100
CURRENT	2.0A	1.6A	1.0A

Contact Resistance: 20 mohms Max.
 Insulation Resistance: 1000 Mohms Min. @ 500 VDC
 Dielectric Withstanding Voltage: 1000 VAC/minute
 Operating Temperature: -55°C to +125°C

PART NO.

405 A X XX E X S X A X X
 1 2 3 4 5 6 7 8 9 10 11

1.SERIES NO.

2.TYPE:

A=Standard
 △ 3.GREEN OPTION
 J=SONY SS-00259(Reserved)
 △ K=SONY SS-00259(Matte Tin)
 (Reserved)
 E=RoHS
 △ F=RoHS(Matte Tin)

4.CONTACT NUMBER
 32,64

5.CONTACT TYPE:
 F=Female

△ 6.CONTACT PLATING:
 G=Gold Flash
 S=Gold Flash (Selective)
 A=5u" Gold (Selective)
 B=10u" Gold (Selective)
 C=15u" Gold (Selective)
 D=30u" Gold (Selective)

7.MOUNTING TYPE:
 S=Straight

8.TYPE

A=B Type For 64 pin
 (Long Body)
 B=B Type For 32 pin
 (Short Body)

9.CONTACT INSERTING OPTION

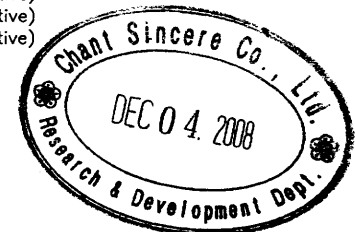
A=Dual Row(a+b)

△ 10.CONTACT LENGTH

DIM FOR "X"
 A=2.5mm
 B=4.0mm
 C=13.0mm
 D=17.0mm
 G=5.0mm

11.INSULATOR COLOR

4=Gray
 △ 5=Gray(420C)



NOTE:

PART NO.	A	B	C
405AX64FXSAACX	90.00	95	85
405AX32FXSBACX	50.00	54	44

UNLESS OTHERWISE SPECIFIED TOLERANCE
 ANG. ±5°
 0. ±0.5
 .0 ±0.3
 .00 ±0.2

SCALE: AS SHOWN UNIT: mm

OXOC
CHANT SINCERE CO., LTD
 TEL:886-02-86471251 FAX:886-02-86472962

REV.	DESCRIPTION	DATE	SIZE	REV.	FILE NAME:
F	ECN-0811252(Chichi) △ (7,F)(9,D)	11/27/08	A4	F	405AKXXFXSXAXX
E	ECN-0606206(Jean) △ (7,D)(7,F)	06/22/06			
D	ECN-0504023(Jenny) △ (7,F)(7,E)(7,D)(5,D)	04/04/05			